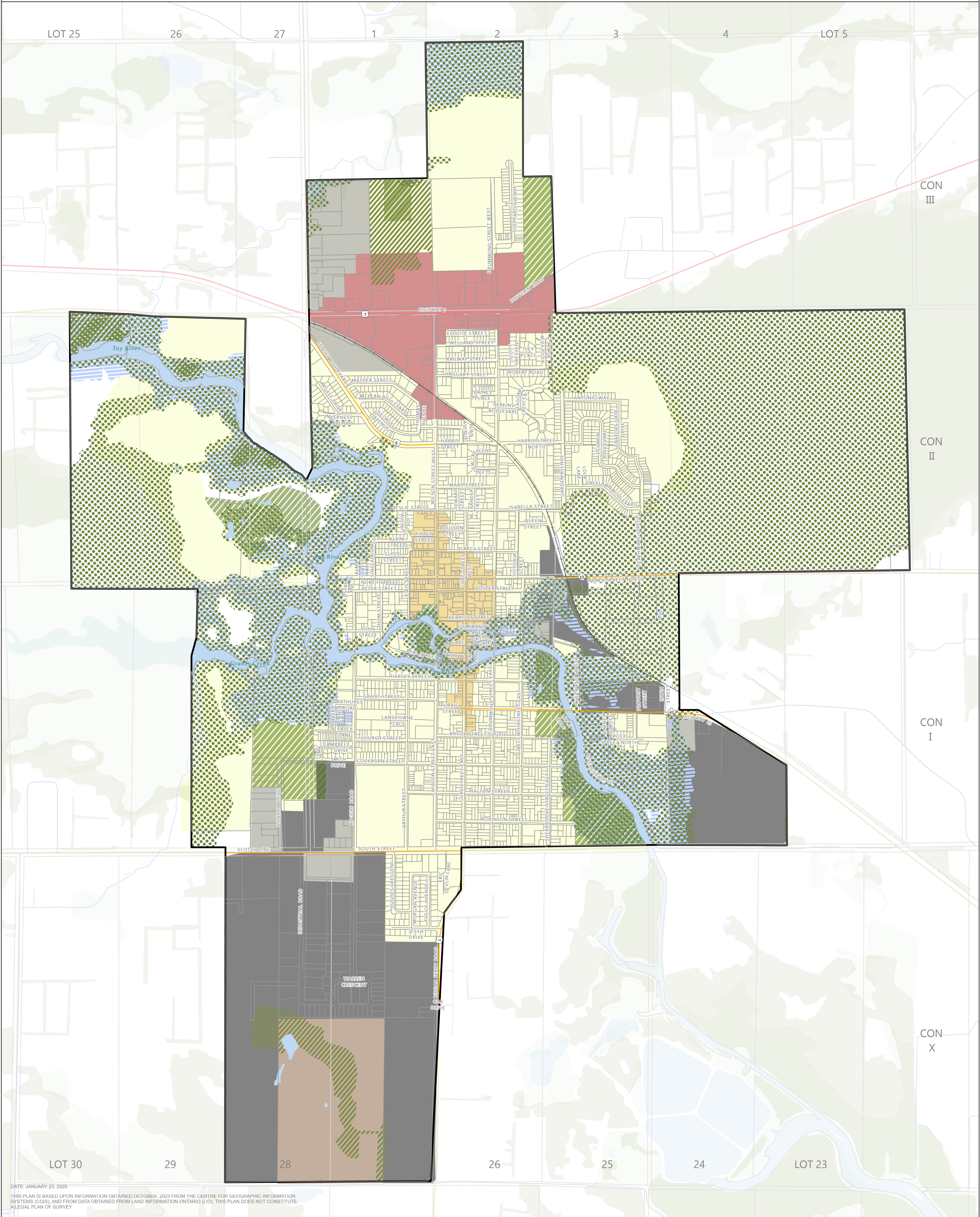
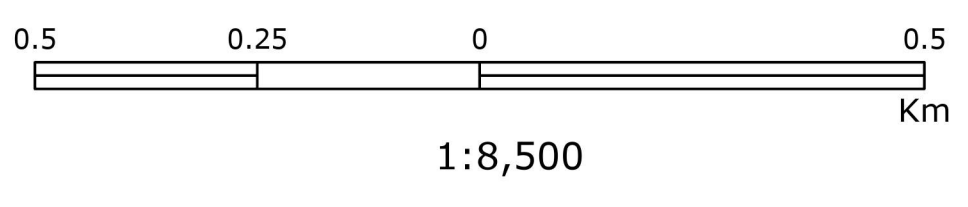
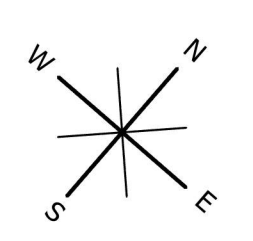


OFFICIAL PLAN FOR THE TOWN OF PERTH

SCHEDULE A LAND USE



DATE: JANUARY 23, 2025
 THIS PLAN IS BASED UPON INFORMATION OBTAINED OCTOBER, 2023 FROM THE CENTRE FOR GEOGRAPHIC INFORMATION SYSTEMS (CGIS), AND FROM DATA OBTAINED FROM LAND INFORMATION ONTARIO (LIO). THIS PLAN DOES NOT CONSTITUTE A LEGAL PLAN OF SURVEY.



LEGEND

- | | | | |
|--------------------|--------------------|--------------------------|-----------------------|
| Municipal Boundary | Provincial Highway | Environmental Protection | Business Park |
| Lot & Concession | Railway | Waste Management | Central Area District |
| Local Road | Waterbodies | Parks/Open Space | Residential |
| County Road | Floodplain | Highway Commercial | Industrial |