

BASEMENT PLAN



Perth-Wilson St. Concept
125 Wilson Street, Perth, Ontario

Basement Plan

SCALE 1/16" = 1'-0"



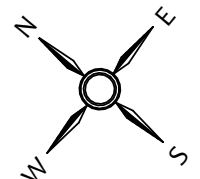
FIRST FLOOR PLAN (GROUND)

TOTAL RENTABLE SPACES: 10
 TOTAL APARTMENT UNITS: 2



Perth-Wilson St. Concept
 125 Wilson Street, Perth, Ontario

First Floor Plan
 SCALE 1/16" = 1'-0"

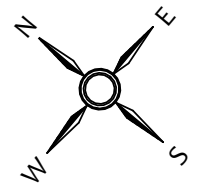
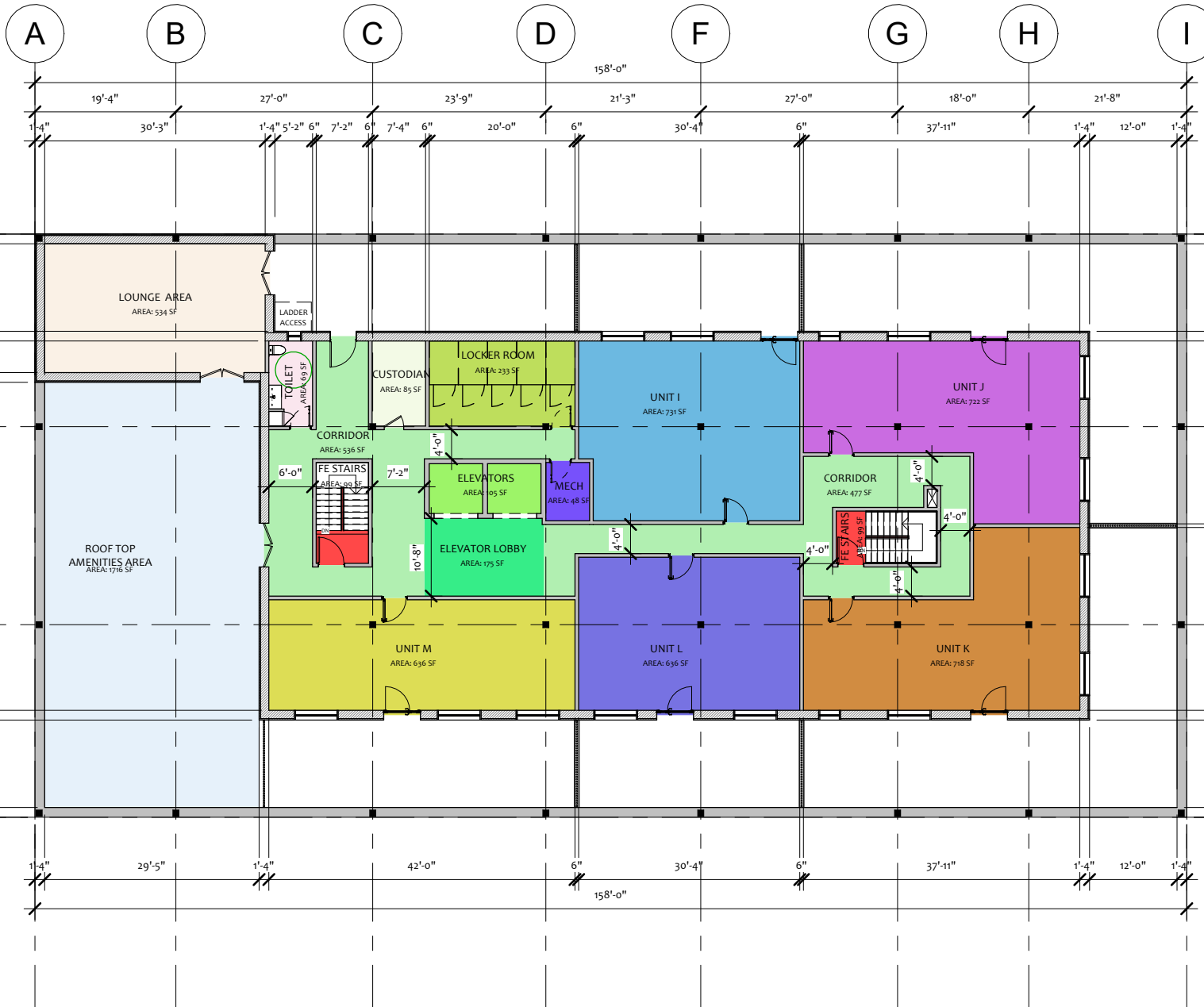


TYPICAL 2ND-5TH FLOOR PLAN

TOTAL APARTMENT UNITS
PER FLOOR (2nd-5th): 14



Perth-Wilson St. Concept
125 Wilson Street, Perth, Ontario
Typical Floor Plan
SCALE 1/16" = 1'-0"



SIXTH FLOOR PLAN

TOTAL APARTMENT UNITS
@ 5th FLOOR: 5



Perth-Wilson St. Concept
125 Wilson Street, Perth, Ontario
Sixth Floor Plan
SCALE 1/16" = 1'-0"



ELEVATION VIEW @ WILSON ST.



Perth-Wilson St. Concept
 125 Wilson Street, Perth, Ontario
 Wilson St. Elevation
 SCALE 1/16" = 1'-0"



ELEVATION VIEW @ ELLIOT ST.



Perth-Wilson St. Concept
 125 Wilson Street, Perth, Ontario
 Elliot St. Elevation
 SCALE 1/16" = 1'-0"



ELEVATION VIEW @ WELLAND ST.



Perth-Wilson St. Concept
 125 Wilson Street, Perth, Ontario
 Welland St. Elevation
 SCALE 1/16" = 1'-0"



ELEVATION @ PARKING AREA

- T/O ROOF PARAPET 68'-0"
- T/O ROOF BEAM 65'-0"
- SIXTH FLOOR CEILING 63'-0"
- SIXTH FLOOR PLAN 54'-8"
- FIFTH FLOOR CEILING 53'-4"
- FIFTH FLOOR PLAN 44'-4"
- FOURTH FLOOR CEILING 43'-0"
- FOURTH FLOOR PLAN 34'-4"
- THIRD FLOOR CEILING 32'-0"
- THIRD FLOOR PLAN 23'-8"
- SECOND FLOOR CEILING 22'-4"
- SECOND FLOOR PLAN 13'-4"
- FIRST FLOOR CEILING 12'-0"
- FIRST FLOOR PLAN 0'-0"
- NGL -0'-6"
- BASEMENT CEILING -1'-10"
- T/O Basement Slab -10'-10"

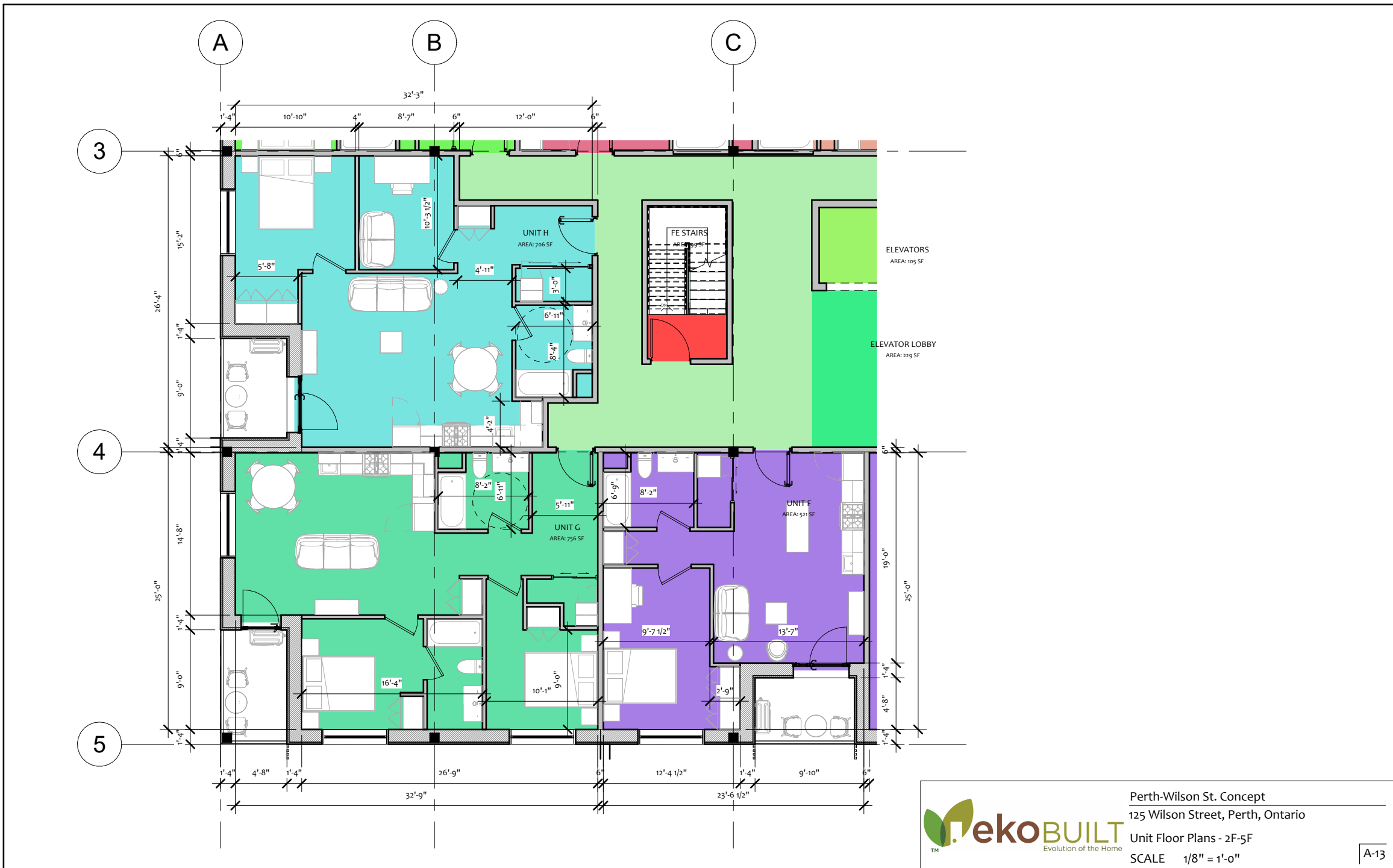
Perth-Wilson St. Concept
 125 Wilson Street, Perth, Ontario
 Parking Area Elevation
 SCALE 1/16" = 1'-0"

ekoBUILT
 Evolution of the Home

A-9



Perth-Wilson St. Concept
 125 Wilson Street, Perth, Ontario
 Unit Floor Plans - 2F-5F
 SCALE 1/8" = 1'-0"



Perth-Wilson St. Concept
 125 Wilson Street, Perth, Ontario
 Unit Floor Plans - 2F-5F
 SCALE 1/8" = 1'-0"



Perth-Wilson St. Concept
 125 Wilson Street, Perth, Ontario

Unit Floor Plans - 6F

SCALE 1/8" = 1'-0"